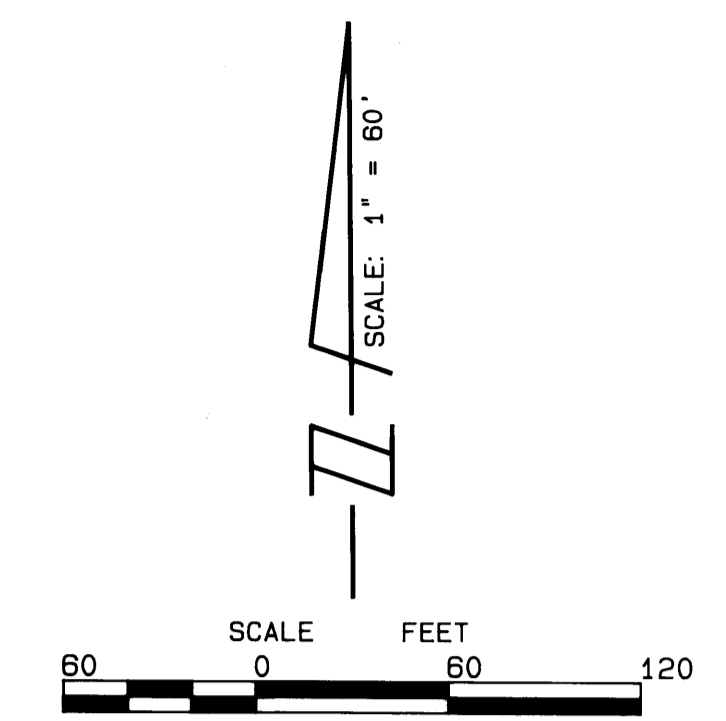


JANUARY, 1988
SHEET 2 OF 2

A PLAT OF HOLLY CREEK SUB-PHASE "C-3"

LYING IN SECTION 21
TOWNSHIP 37 SOUTH, RANGE 41 EAST
MARTIN COUNTY, FLORIDA



I, Marsha Stiller, Clerk of the Circuit Court of Martin County, Florida, hereby certify that this Plat was filed for record in Plat Book 11, Page 35, Martin County, Florida, Public Records, this 17 day of May, 1988.
Marsha Stiller, Clerk Circuit Court Martin County, Florida
By: _____ Deputy Clerk
File No. _____
(Circuit Court Seal)

SURVEYOR'S CERTIFICATE

STATE OF FLORIDA COUNTY OF MARTIN S.S.
THIS IS TO CERTIFY THAT THIS PLAT OF HOLLY CREEK, SUB-PHASE C-3 IS A TRUE AND CORRECT REPRESENTATION OF A SURVEY MADE UNDER MY RESPONSIBLE DIRECTION AND SUPERVISION AND THAT SAID SURVEY IS ACCURATE TO THE BEST OF MY KNOWLEDGE AND BELIEF AND THAT (P.R.M.'S), PERMANENT REFERENCE MONUMENTS HAVE BEEN SET AND THAT (P.C.P.'S), PERMANENT CONTROL POINTS WILL BE PLACED AS REQUIRED BY LAW AND FURTHER THAT THE SURVEY DATA COMPLIES WITH ALL THE REQUIREMENTS OF CHAPTER 177, FLORIDA STATUTES, AS AMENDED AND ORDINANCES OF MARTIN COUNTY, FLORIDA.

David M. Jones
DAVID M. JONES
REGISTERED SURVEYOR NO. 3909
STATE OF FLORIDA

COUNTY APPROVAL

STATE OF FLORIDA COUNTY OF MARTIN S.S.
THIS PLAT IS HEREBY APPROVED, BY THE UNDERSIGNED, ON THE DATE, OR DATES INDICATED.

1-26-88
January 26, 1988
January 26, 1988
January 26, 1988

David E. Holman
COUNTY ENGINEER
Thomas P. Presley
COUNTY ATTORNEY
PLANNING AND ZONING COMMISSION MARTIN COUNTY, FLORIDA
BY: *[Signature]*
CHAIRMAN
BOARD OF COUNTY COMMISSIONERS MARTIN COUNTY, FLORIDA
BY: *[Signature]*
CHAIRMAN

ATTEST:
Marsha Stiller
CLERK
[Signature]

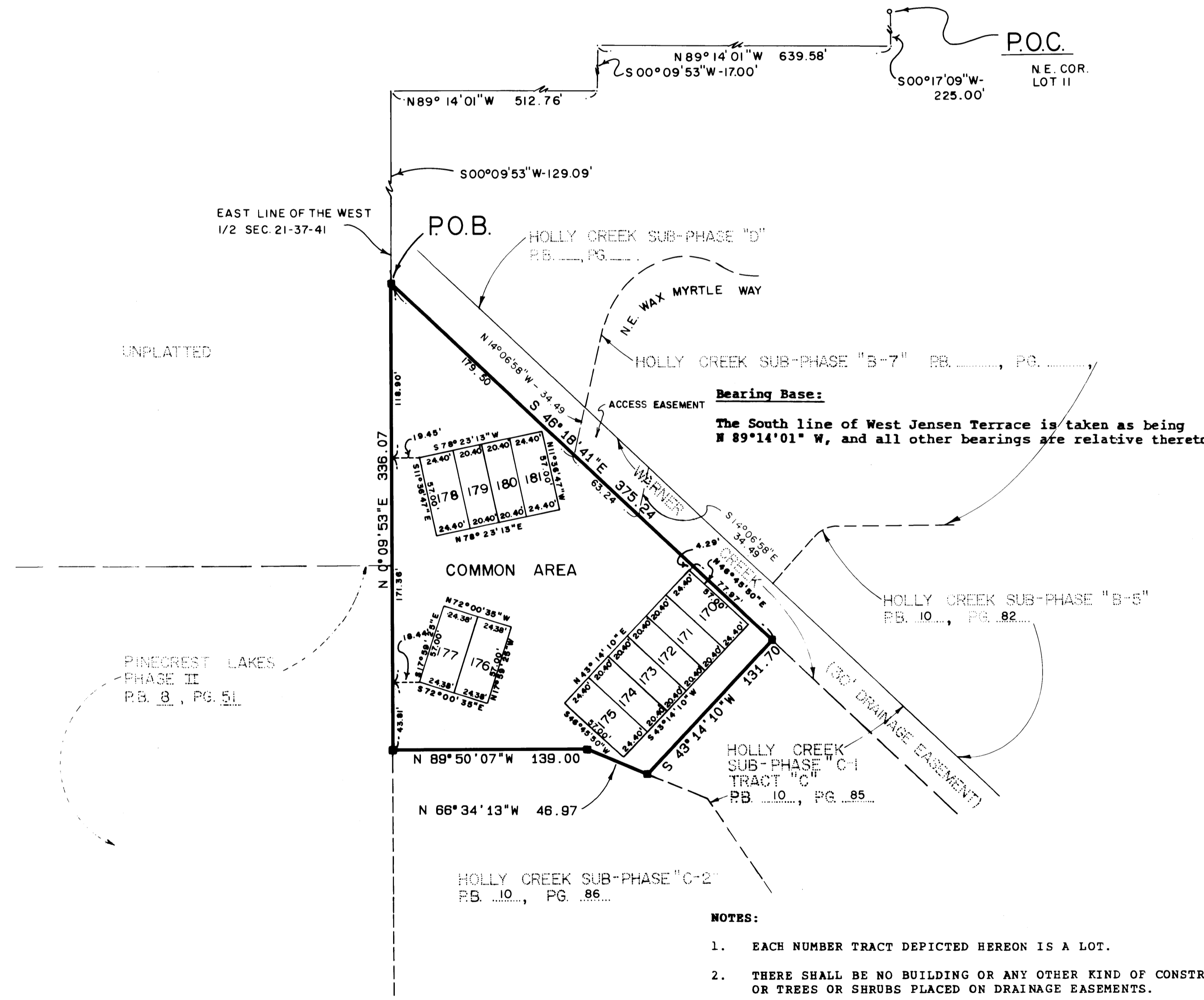
TITLE CERTIFICATION

STATE OF FLORIDA COUNTY OF MARTIN S.S.

A.T.C.O. TITLE SERVICES, INC. D/B/A/ ASSURANCE TITLE COMPANY OF MARTIN COUNTY, DULY LICENSED IN THE STATE OF FLORIDA, BY ITS UNDERSIGNED PRESIDENT, HEREBY CERTIFIES THAT IT HAS CAUSED THE TITLE, TO THE HEREON DESCRIBED PROPERTY, TO BE EXAMINED, THAT IT FINDS THE TITLE TO THE PROPERTY IS VESTED TO THE CORPORATION EXECUTING THE DEDICATION HEREON. THAT THE CURRENT TAXES HAVE BEEN PAID, AND THAT THE MORTGAGES ENCUMBERING THE LAND DESCRIBED HEREON ARE AS FOLLOWS:

- MORTGAGE FROM H.C. PROPERTIES, INC., A FLORIDA CORPORATION, TO LOUISE PEARCE, AS RECORDED IN OFFICIAL RECORDS BOOK 630, PAGE 195, AND AS MODIFIED BY INSTRUMENTS APPEARING IN OFFICIAL RECORDS BOOK 676, PAGE 1368; OFFICIAL RECORDS BOOK 692, PAGE 183; OFFICIAL RECORDS BOOK 696, PAGE 1871, AND OFFICIAL RECORDS BOOK 715, PAGE 417.
- MORTGAGE FROM H.C. PROPERTIES, INC., A FLORIDA CORPORATION TO FIRST NATIONAL BANK AND TRUST AS RECORDED IN OFFICIAL RECORDS BOOK 676, PAGE 1353, ALONG WITH THAT CERTAIN COLLATERAL ASSIGNMENT AS RECORDED IN OFFICIAL RECORDS BOOK 676, PAGE 1368, AND THAT CERTAIN FINANCING STATEMENT AS RECORDED IN OFFICIAL RECORDS BOOK 676, PAGE 1364.
- MORTGAGE FROM H.C. PROPERTIES, INC., A FLORIDA CORPORATION, TO FIRST NATIONAL BANK AND TRUST COMPANY, AS RECORDED IN OFFICIAL RECORDS BOOK 692, PAGE 177.
- COLLATERAL ASSIGNMENT FROM H.C. PROPERTIES, INC., A FLORIDA CORPORATION TO FIRST NATIONAL BANK AND TRUST COMPANY AS RECORDED IN OFFICIAL RECORDS BOOK 715, PAGE 485.
- MORTGAGE FROM H.C. PROPERTIES, INC., A FLORIDA CORPORATION TO FIRST NATIONAL BANK AND TRUST COMPANY AS RECORDED IN OFFICIAL RECORDS BOOK 715, PAGE 418, TOGETHER WITH THAT CERTAIN COLLATERAL ASSIGNMENT AS RECORDED IN OFFICIAL RECORDS BOOK 715, PAGE 425, AND THAT CERTAIN FINANCING STATEMENT AS RECORDED IN OFFICIAL RECORDS BOOK 715, PAGE 438.
- MORTGAGE FROM H.C. PROPERTIES, INC., A FLORIDA CORPORATION TO SEABOARD SAVINGS BANK, F.S.B. AND ITS SUCCESSORS AND/OR ASSIGNS RECORDED IN OFFICIAL RECORDS BOOK 727, PAGE 136.

February 29, 1988
DATE
BY: *[Signature]*
ZELIA PAUL, PRESIDENT
A.T.C.O. TITLE SERVICES, INC.
D/B/A ASSURANCE TITLE CO.
OF MARTIN COUNTY
FIRST NATIONAL BANKING CENTER
815 COLORADO AVENUE, SUITE 318
STUART, FLORIDA 34994



- NOTES:
- EACH NUMBER TRACT DEPICTED HEREON IS A LOT.
 - THERE SHALL BE NO BUILDING OR ANY OTHER KIND OF CONSTRUCTION OR TREES OR SHRUBS PLACED ON DRAINAGE EASEMENTS.
 - THERE SHALL BE NO BUILDING OR OTHER PERMANENT STRUCTURES PLACED ON UTILITY EASEMENTS.
 - THERE SHALL BE NO LOT SPLITS EXCEPT TO CREATE LARGER LOTS.
- - DENOTES (P.R.M.) PERMANENT REFERENCE MONUMENT, FOUND #959

| | | | |
|---|--|---|---|
| LINDAHL, BROWNING FERRARI & HELLSTROM, INC. Consulting Engineers, Planners & Surveyors P.O. BOX 727 JUPITER, FLORIDA 33458 | 10 CENTRAL PARKWAY SUITE 420 STUART, FLORIDA 33997 | 2 | 2 |
|---|--|---|---|